

# TONGUE BONE CUTTER

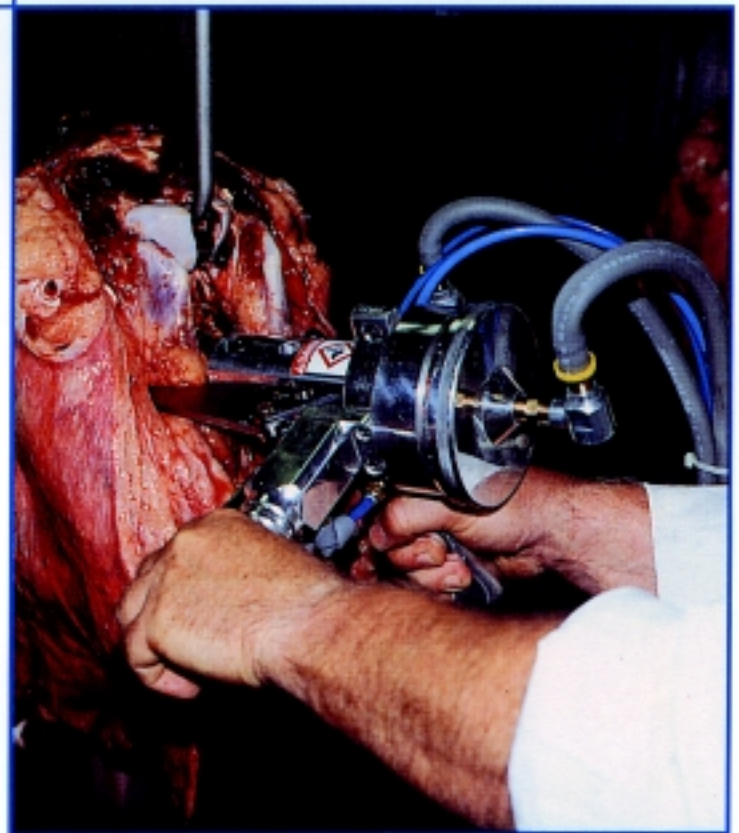
## Model TBC



The Jarvis Model TBC — pneumatically powered cutter for cutting beef tongue bones.

# JARVIS

- Ideal for cutting the hyoid bone — in all size kills.
- Reduces operator fatigue caused by tongue bone clipping with hand shears.
- Lightweight and small for maneuverability.
- Cuts accurately and quickly — no bone splinters.
- Robust and durable construction for long, trouble-free life.
- Anti-tie down controls for operator safety.



## FAST AND EASY TONGUE BONE CUTTING

# TONGUE BONE CUTTER

## Model TBC

### Specifications

Drive		Pneumatic
Operating Pressure	90 PSI	6.1 bar
Air Consumption (per cycle)	0.25 ft <sup>3</sup>	0.009 m <sup>3</sup>
Cutting Force	657 lb·f	2.9 kN
Cutting Cycle Time		0.9 sec
Control Handle		
Pneumatic Dual Anti-tie Down	90 PSI	6.1 bar
Blade Opening		
At Tips	0.875 in	22 mm
Widest	1.125 in	29 mm
Overall Length	13 in	330 mm
Weight	8.4 lbs	3.8 kg

### Equipment Selection and Accessories

### Order Number

Model TBC		
	with air control circuit and hoses	4019006
Air Filter / Regulator / Lubricator		3022003
Balancer		4042019
Blade		1023154



Products for the meat and poultry industry

Jarvis Products Corporation • 33 Anderson Road • Middletown, CT 06457 • United States of America  
Telephone (860) 347-7271 • Fax (860) 347-6978