

CIRCULAR BREAKING SAW

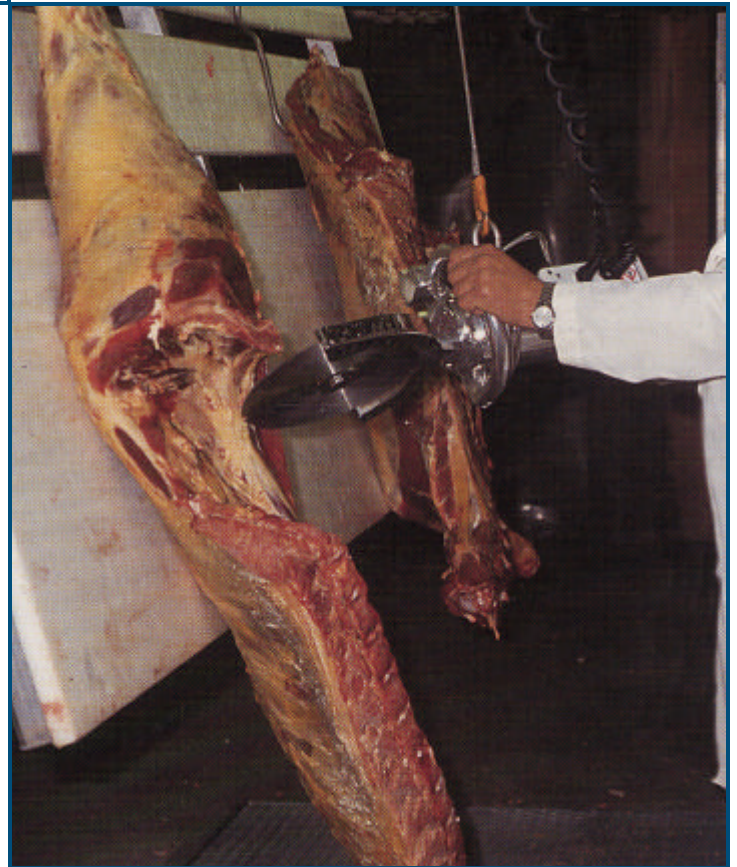
Model SEC 230



**The Jarvis Model SEC 230 -
electric powered circular breaking saw.**

JARVIS

- The SEC 230, with a 3 inch (76 mm) depth of cut, is ideally suited for:
 - Beef: cutting chucks, shoulders, ribs, forequarters, hindquarters, chine bones, briskets and loins.
- Sealed, 1.9 hp electric motor for ultimate performance.
- Short overall length and specially designed handles for easy handling.
- Features electric or mechanical braking.
- Smooth surface construction for easy cleaning and optimum hygiene.
- Anti-tie down controls for operator safety.
- Meets national and international requirements for hygiene and safety.



SMOOTH - POWERFUL - RUGGED

CIRCULAR BREAKING SAW

Model SEC 230

Specifications

Drive Electric

Model SEC 230

Motor Power	1.9 hp	1400 W
Operating Voltage	230 / 460 V, 3 phase, 60 Hz other voltages and 50 Hz available	
Blade Speed		
50 Hz		1350 rpm
60 Hz		1650 rpm
Control Handles	Electric Dual Anti-tie Down or One Trigger (CE)	
Brake	Electric (DC) or Mechanical	
Blade Diameter	9.1 in	230 mm
Cutting Depth (maximum)	3.0 in	75 mm
Overall Length	24 in	610 mm
Weight	40 lbs	18.1 kg

Equipment Selection and Accessories

Order Number

Model Sec 230

230 V, 3 phase, 60 Hz* single trigger with mechanical brake	4004142
380 V, 3 phase, 50 Hz* dual triggers with electric brake	4004033
380 V, 3 phase, 50 Hz* single trigger with mechanical brake	4004150
460 V, 3 phase, 60Hz* dual triggers with electric brake	4004036
460 V, 3 phase, 60 Hz* single trigger with mechanical brake	4004143

Blades *Please specify blade preference when ordering.*

Ø 9.1 in / 230 mm - 130 teeth	1023286
Ø 9.1 in / 230 mm Skip Tooth - 72 teeth	1023387
Ø 9.1 in / 230 mm, Noise Reduction - random teeth	1023299
Ø 9.1 in / 230 mm, Noise Reduction - 60 teeth	1023348

Balancer 4042004

* Other configurations available: please specify voltage, hertz and blade preference when ordering.



Products for the meat and poultry industry

Jarvis Products Corporation · 33 Anderson Road · Middletown, CT 06457-4926 · United States of America
Telephone (860) 347-7271 · Fax (860) 347-9905 · jarvis.products.corp@snet.net