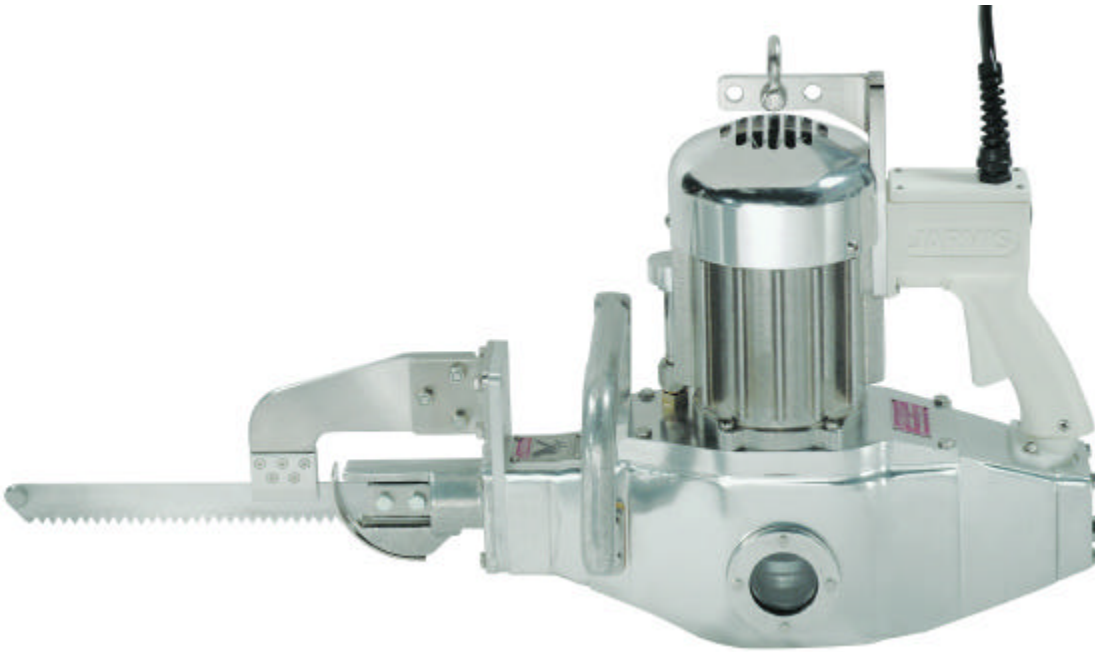


# BEEF BRISKET SAW

## Model MG-1E



**The Jarvis Model MG-1E -  
electric powered brisket saw for beef.**

# JARVIS

- The powerful, high-performance MG-1E is designed to cut beef briskets quickly - only 3 seconds.
- Small and maneuverable for optimum handling.
- A balanced drive system makes the MG-1E smooth and quiet for less operator fatigue.
- Minimal maintenance due to the oil bath lubricated drive.
- 1.9 horsepower, totally enclosed, 3 phase motor for optimum performance.
- Quiet - less than 85 dB.
- Lightweight - only 61 lbs (28 kg).
- Meets international requirements for safety and hygiene.



**SMOOTH - FAST - DURABLE**

# BEEF BRISKET SAW

## Model MG-1E

<b>Specifications</b>
-----------------------

Drive	Electric	
<hr/>		
<b>Model MG-1E</b>		
Motor Power	1.9 hp	1400 W
Operating Voltage	230 / 460 V, 3 phase, 60 Hz other voltages and 50 Hz available	
Cut Speed		
50 Hz	903 ft / min	275 m / min
60 Hz	1083 ft / min	330 m / min
Cutting Cycle Time		3 sec
Control Handle		
Single Trigger		Electric
Blade Lengths		
	9.5 in	241 mm
	10.5 in	267 mm
	11.5 in	292 mm
	13.0 in	330 mm
Overall Length (with 9.5 in / 240 mm blade)	31 in	787 mm
Weight	61 lbs	27.7 kg

<b>Equipment Selection and Accessories</b>	<b>Order Number</b>
--	---------------------

Model MG-1E			
	230 V, 3 phase, 60 Hz*		4005060
	460 V, 3 phase, 60 Hz*		4005056
<hr/>			
Blade (length)			
	9.5 in	240 mm	1023083
	10.5 in	270 mm	1023084
	11.5 in	290 mm	1023215
	13.0 in	330 mm	1023230
<hr/>			
Balancer			4042021

\* For other configurations: please specify voltage, hertz, and intended country of operation when ordering.



Products for the meat and poultry industry

Jarvis Products Corporation · 33 Anderson Road · Middletown, CT 06457-4926 · United States of America  
 Telephone (860) 347-7271 · Fax (860) 347-9905 · jarvis.products.corp@snet.net